

Book your personalized demo now and
get a complimentary onboarding
session to fast-track success.

Limited Demo Slots Available

nrpatnaik@foyer.tech.com

Built in India. Born global.

Scan for quick sign up



Transform Customer Relationships
With the Power of **AI-Driven CRM Farm**



Empower your business to attract,
engage, and retain customers all from a
single, intelligent platform designed to
grow with you.



**Built by FoyerTech to make
CRM human again.**

What CRMFarm does best?

AI-driven features for modern teams



Unified Customer Management

- Centralized profiles with real-time updates.
- 360° visibility across sales, marketing, and support teams.



AI-Powered Lead & Opportunity Automation

- Capture leads from web, social, and offline sources
- AI-driven lead scoring and instant routing to your team



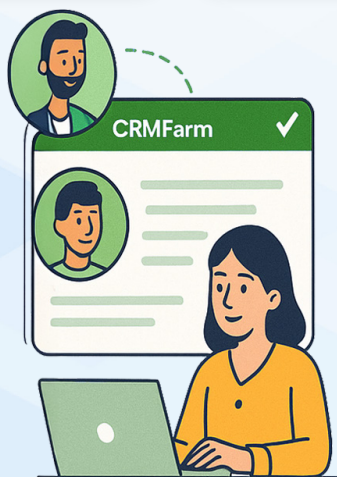
Personalized Engagement at Scale

- Automated email, SMS, chat, and social outreach
- Context-aware AI messaging that feels human



Real-Time AI Insights & Analytics

- Live dashboards with predictive analytics and forecasting
- Data-driven decisions powered by machine learning



Why leaders choose CRMFarm?

AI-enabled business growth

Scale Smart, Not Hard

Automate routine tasks and optimize every customer interaction with AI precision.



Make Data-Driven Decisions

Gain real-time insights backed by AI-powered analytics.

Focus on What Matters

Free your team from repetitive workflows with intelligent automation.



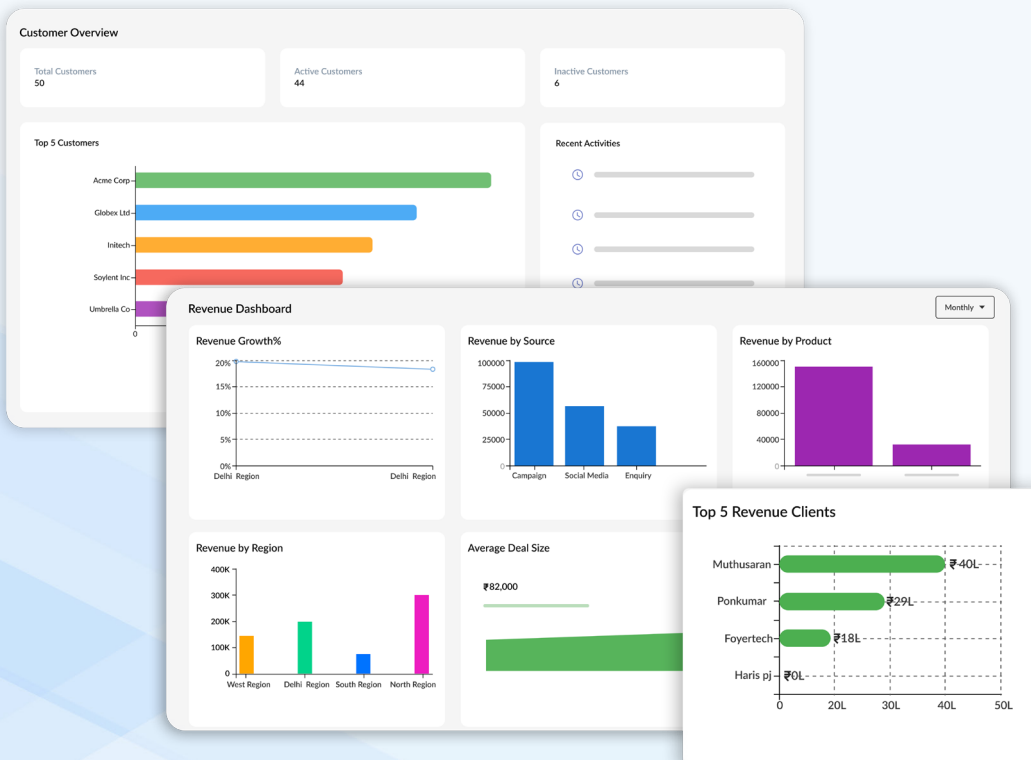
Predict & Plan Confidently

Use AI forecasting to stay ahead in a dynamic market.



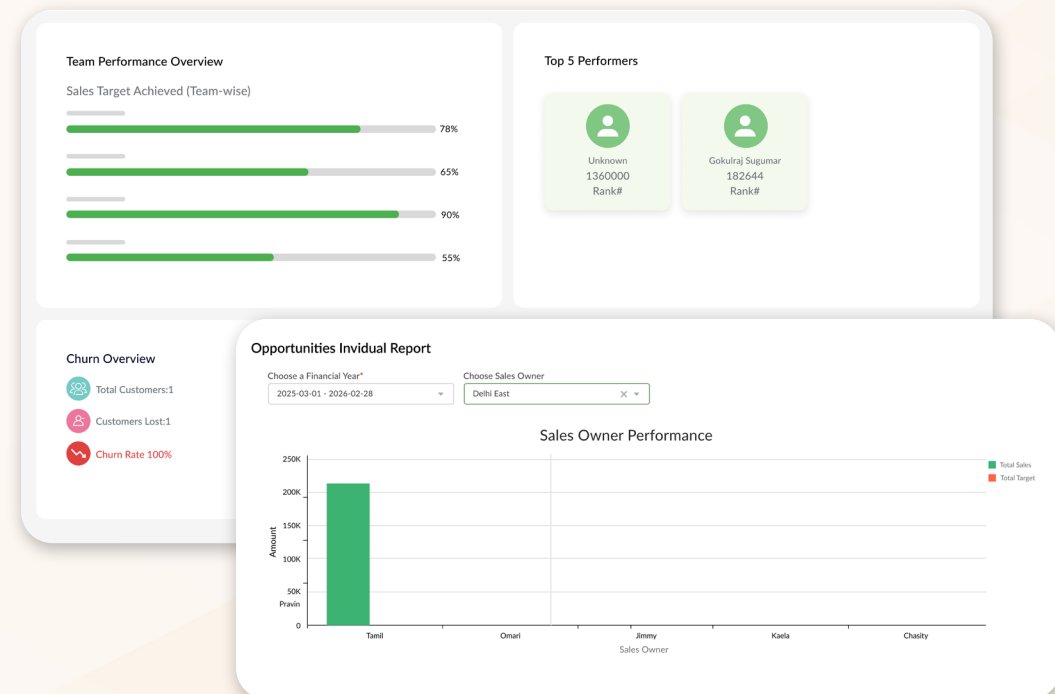
Benefits at a glance

- ✓ Never miss a lead - AI-based lead scoring & smart follow-up reminders keep your pipeline active.
- ✓ Cut response time in half with real-time task automation.
- ✓ Reach the right customer at the right time with personalized, trigger-based messaging.
- ✓ Make faster decisions with real-time dashboards.



Why CRM Farm is ideal for Retail?

- ✓ Centralized Customer Data: Capture and manage shopper info from online, in-store, and social sources in one place.
- ✓ Targeted Campaigns: Personalize promotions across email, SMS, and WhatsApp to drive higher engagement.
- ✓ Inventory Intelligence: Monitor stock levels and buying trends to make smart merchandising decisions.
- ✓ Real-time Sales Analytics: Gain insights into customer behavior, team performance, and campaign ROI instantly.



CRMfarm for Retail

Drive sales and deepen customer loyalty



Smart Lead Capture:

Collect customer data from online, in-store, and social channels.
Auto-segment and route leads to the right team.



Personalized Marketing

Send targeted offers via email, SMS, and WhatsApp.
Keep shoppers engaged with timely, relevant messaging.



Sales & Inventory Insights

Track buying patterns and stock levels in real time.
Make informed merchandising and marketing decisions.



Meet the creators

We're FoyerTech

Makers, builders, and problem-solvers with
deep AI expertise.
Simpler. Smarter. Realer.



Our mission

“CRMs shouldn't feel like chores.
They should feel like clarity.”

N R Patnaik
Managing Director
Foyer Technology

